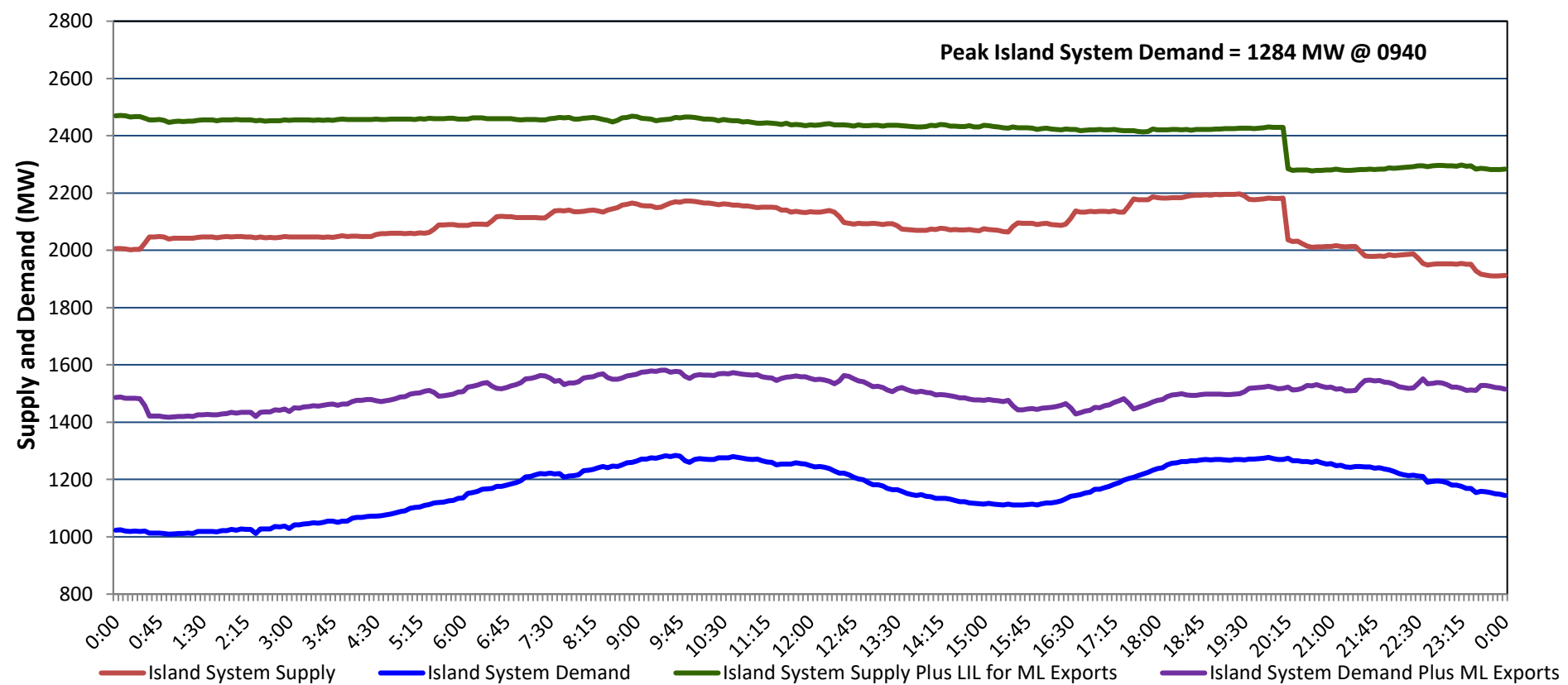


Newfoundland Labrador Hydro (NLH) Supply and Demand Status Report Filed Monday, March 03, 2025

Section 1 Island Interconnected System - Supply, Demand & Exports Actual 24 Hour System Performance For Saturday, March 01, 2025



Island Supply Notes For March 01, 2025

- A** As of 1348 hours, February 19, 2025, Holyrood Unit 1 available at 105 MW due to forced derating (170 MW).
B At 2013 hours, March 01, 2025, Holyrood Unit 3 unavailable due to forced outage (150 MW).

Section 2 Island Interconnected System - Supply, Demand & Outlook

Sun, Mar 02, 2025	Island System Outlook ²	Seven-Day Forecast	Island System Daily Peak Demand (MW)	
			Forecast ⁸	Adjusted ⁶
Island System Supply: ⁴	2,041 MW	Sunday, March 2, 2025	1,165	1,062
NLH Island Generation: ^{3,7}	1,630 MW	Monday, March 3, 2025	1,395	1,289
NLH Island Power Purchases: ⁵	155 MW	Tuesday, March 4, 2025	1,505	1,398
NP and CBPP Owned Generation:	210 MW	Wednesday, March 5, 2025	1,500	1,393
LIL/ML Net Imports to Island: ⁹	46 MW	Thursday, March 6, 2025	1,345	1,239
		Friday, March 7, 2025	1,200	1,096
7-Day Island Peak Demand Forecast:	1,505 MW	Saturday, March 8, 2025	1,260	1,155

Island Supply Notes For March 02, 2025

- C** At 0200 hours, March 02, 2025, Holyrood Unit 3 available (150 MW).

- Notes:
1. Generation outages for running and corrective maintenance are included. These are not unusual for power system operations. They generally do not impact customer supply. Hydro schedules outages to system equipment whenever possible to coincide with periods when customer demands are low and sufficient supply reserves are available. However, from time to time equipment outages are necessary and reserves may be impacted.
 2. As of 0800 Hours.
 3. Gross continuous unit output.
 4. Gross output from all Island sources (including Note 3).
 5. NLH Island Power Purchases include: ML Imports, Exploits Generation, Rattle Brook, Star Lake, Wind Generation and capacity assistance (when applicable).
 6. Adjusted for interruptible load and the impact of voltage reduction when applicable.
 7. Due to limitations inherent in the design of combustion turbines, the output of combustion turbines may be reduced in the event that ambient temperatures exceed the threshold required for full rated output. This threshold is dependent on the design of each turbine.
 8. Does not include ML Exports.
 9. LIL Import sunk in the Island System. Actual LIL flows will be restricted by various system conditions including, but not limited to, Island Load, ML Exports and Avalon Unit status.

Section 3 Island Peak Demand and Exports Information Previous Day Actual Peak and Current Day Forecast Peak

Sat, Mar 01, 2025	Island Peak Demand ¹⁰	9:40	1,284 MW
	Exports at Peak		294 MW
	LIL Net Imports to Island		3,724 MWh
Sun, Mar 02, 2025	Forecast Island Peak Demand		1,165 MW

- Notes: 10. Island Demand is supplied by NLH generation and purchases, LIL Imports plus generation owned and operated by Newfoundland Power and Corner Brook Pulp & Paper (Deer Lake Power, DLP).